

Te Ao Hou  
Trust

**MAY | HARATUA 2020  
COVID19 UPDATE**

Tēnā koutou katoa,

We are at **Alert Level 3**. Aotearoa moved to Alert level 3 at 11:59pm on Monday 27 April. We will stay in Alert Level 3 for two weeks. Te Ao Hou Trust Kaimahi are Limiting interactions with others, this is our best defence against COVID-19. Operating Under Alert Level 3 we must be vigilant.

Most staff are working from their homes at this time. However we encourage whānau who need support to please contact us on phone number 07 3156266 or through our website [www.teaohou.org.nz](http://www.teaohou.org.nz). Our on going support for whānau is our priority.

**OFFICE HOURS**

**8:30am - 4pm Mon to Fri**

... Please call first before coming to the office

# WHĀNAU DIRECT

Our support for whānau is ongoing during Level 3. Whānau Direct grant is available to people directly affected by Covid-19, such as loss of income. The funding is available to help with essential living expenses, including power, rent, firewood and urgent assistance with kai.

Our communication lines are open between office hours. This includes phone, email and social media. Please get in touch for assistance.



07 315 6266



[www.teaohou.org.nz](http://www.teaohou.org.nz)



TAHTrust

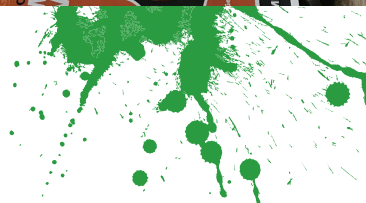
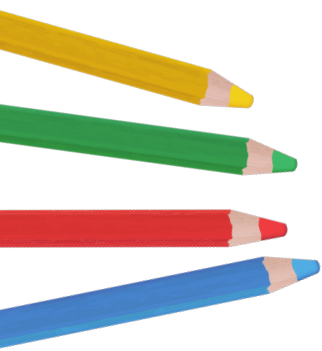
our support during level 4



activity packs

This Month Te Ao Hou Trust kaimahi have been busy making packs filled with resources to help whānau get through the nationwide lockdown.

Distribution is continuing throughout the Ōpōtiki district, to help support well being during this time.



### Covid19 local community response

Whānau Ora Hygiene Packs have been delivered around Ōpōtiki to those whānau most in need.

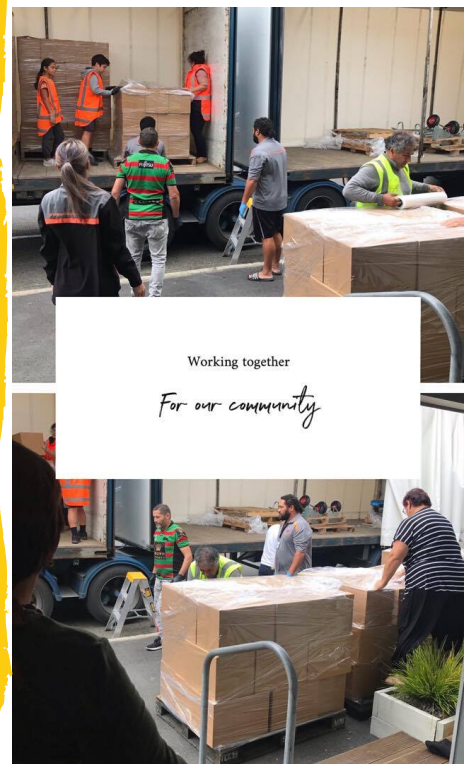
Working with us to help deliver to you is our wonderful team from Ōpōtiki Maori Womens Welfare League. also Many thanks to Wilson Bros for the delivery and the team from Te Pou Oranga o Whakatohea for the helping hand.

"Working together for Community"



Maori women's welfare league team

Delivering hygiene packs to whanau across Ōpōtiki



Working together  
For our community

Unite against COVID-19, together we can slow the spread.

**Influenza.**  
Don't get it.  
Don't give it.

*FREE Flu Vaccines available now for Kaumātua (65+ years), hapū māmā, tamariki with respiratory conditions and for those who have chronic conditions. It is now more important than ever to get your Influenza Vaccine at your GP. For everyone else, the Ministry of Health will make vaccines available from Monday 27th April 2020. For more information, talk to your doctor, nurse or pharmacist, or call 0800 466 863*

## Pop Up Drive-Thru

### COVID-19 TESTING & ASSESSMENT CENTRE

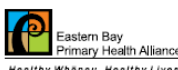
Kia Ora, Welcome  
to the Ōpōtiki Pop  
Up Drive-Thru  
COVID-19 Testing &  
Assessment Centre



All patients with the following  
symptoms are eligible to be seen  
at the drive-thru facility:

- Cough
- Shortness of Breath
- Sore Throat
- Runny Nose

*All symptoms can be with or without fever.*



**UPDATE:** The Ōpōtiki Community Based Assessment Centre (CBAC), based at the Senior Citizens Hall, 1 King Street, Ōpōtiki is a drive-thru facility for Ōpōtiki residents to access COVID-19 testing and assessment. All patients with the following symptoms are eligible to be seen at the drive-thru facility - **Cough, Shortness of Breath, Sore Throat, Runny Nose. All symptoms can be with or without fever.**

If you have your NHI number, please bring this with you. If you are unsure if you meet the eligibility, please call your General Practice or Healthline for advice.

**Ōpōtiki (CBAC) will run on Thursdays and Saturdays 10am-2pm from 7 May.**

All patients are required to arrive at the drive-thru assessment centre in a vehicle, only with people within your bubble.

# WHANAU SUPPORT

Hauora is paramount, therefore, we must check in on your whānau, neighbours and others to make sure they are well.

Alert level 3 People must stay within their household bubble but can expand this to reconnect with close whānau, or bring in caregivers, or support isolated people. It's important to protect your bubble if you extend it. Keep your bubble exclusive and only include people where it will keep you and them safe and well. If anyone within your bubble feels unwell, they should self-isolate from everyone else within your bubble and please contact the Healthline on: 0800 358 5453 for Covid-19 health advice and information,



We also encourage all whānau to keep informed by following the **Ministry of Health updates** and information at **[www.covid19.govt.nz](http://www.covid19.govt.nz)**.

Tight restrictions still continue under Alert Level 3. The main rule remains the same – he noho kāinga, he oranga tangata, stay home, save lives.