



# ANNUAL REPORT 2020

TE AO HOU TRUST  
ŌPŌTIKI.

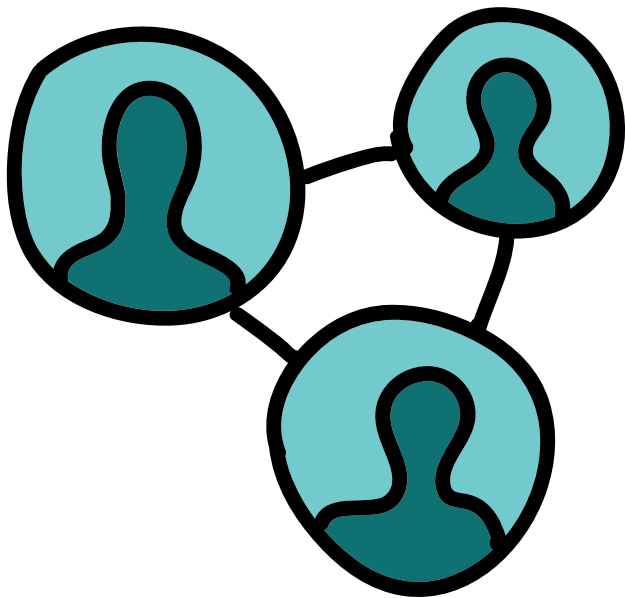
# STRATEGIC INTENT 2025

## *Our Mission*

To inspire flourishing communities

## *Our Vision*

Flourishing people Flourishing places



## *Our Values*

Toioratanga  
Manaakitanga  
Rangatiratanga

## *Our Outcomes*

TE AO HOU ACTIVITIES AND SERVICES ARE REQUIRED TO CONTRIBUTE TO ACHIEVING THE FOLLOWING THREE HIGH LEVEL OUTCOMES

1. AN EFFECTIVE ORGANISATION AND A FAIR EMPLOYER;
2. NURTURING IDEAS AND PEOPLE;
3. FINANCIAL LONGEVITY



## CHAIRMAN'S REPORT

**Tēnā koutou katoa and welcome one and all to the 2020 Annual General Meeting.**

**The advent of Covid-19 has created unique challenges for a small community organisation such as Te Ao Hou Trust and it is pleasing to report through prudent management and a boost in government funding, the Trust was not adversely affected financially and in fact was able to support more whānau when required.**

**The dedicated staff who worked through level 4 lockdown to support whānau have the Board's deepest admiration and we cannot thank them enough for their hard work which is still continuing today.**

**The Board would also like to extend their thanks to all other staff who were not at the coalface but worked remotely and upheld the values and ethics of the Trust despite the many challenges Covid-19 presented.**

**The outstanding leadership shown by our CE Linda Steel across all activities of the Trust is very much appreciated by the Board and we express our deepest thanks for uplifting morale and pushing the boundaries during the difficult times and maintaining the integrity of the Trust, not only through Covid-19 but for the past year.**

**No reira "kia kaha, kia maia, kia manawanui"**

**Dr Mark Haywood**



# CHIEF EXECUTIVE'S REPORT



Ngā mihi mahana ki a koutou katoa

The past year has been unparalleled with the disruption caused through the Covid-19 pandemic world-wide. We all watched in disbelief when our Prime Minister announced what levels would be implemented and then within a matter of days Aotearoa went into Level 4 lockdown.

Covid-19 turned out to be an accelerator of change as Te Ao Hou Trust had to think outside the box in how to work with whānau during the height of the pandemic through level 4 and 3 lockdown. The majority of staff were set up to work remotely from home for over six weeks but there was a core group of four staff dedicated to working within the office confines with all appropriate protocols in place.

Like many small communities around Aotearoa, it was humbling to see the massive collaboration occur between the local services and Civil Defence at the height of the Covid-19 pandemic and our thanks go out to the local Civil Defence team, Te Pou Oranga o Whakatōhea, Whakaatu Whanaunga Trust, Whakatōhea Maori Trust Board, Opotiki Māori Women's Welfare League, New World, Eastern Bay Primary Health Alliance, Te Puna Ora o Mataatua, local marae, the three General Practices in town (Toi Ora Health, Church Street Surgery and Whakatōhea Health Centre) as well as the many individuals who went out of their way to support their neighbours and others through this very trying time.

What worked, what didn't work, how did the staff cope, did it make a difference to whānau....these were the questions we often asked ourselves when we were able to take a breather and only time will tell as Covid-19 is still impacting on each and everyone of us for some time to come.....

Over the past year there have been staff changes, to those who have moved on we wish you every success and to the new staff members, nau mai haere mai and I am sure your contributions will be greatly appreciated.

Last but not least, Te Ao Hou Trust continues to operate in the black with a very robust working capital and no long term debt. This is a credit not only to all the staff but to our Board and I am so appreciative of the awesome team we have at the Trust.

Tena tatou katoa nga whanui o Ōpōtiki, kei te mihi mahana ki a koutou katoa.

**Linda Steel**

# SNAPSHOT OF THE YEAR

- \$16,000.00 New World vouchers issued to whanau
- 135 Whanau Direct applications approved
- 600 Ready to eat Food Packs and 150 Ready 2 Go Packs distributed
- Water and Firewood deliveries organized
- Prescriptions picked up and delivered to homes
- Furniture/heaters/washing machines/dehumidifiers/ clothing/linen/chrome books purchased for whanau
- Supported the local Food bank



1100 hygiene packs distributed



Delivering hygiene packs to whanau across Ōpōtiki

over 100 Activity packs distributed to tamariki across Ōpōtiki.



-Thanks to our Torere whanau for the inspiration 'Phone a Pakeke'



Everyone Eats Ōpōtiki Project team members discussing the key challenges to building a sustainable local Kai system.



Uncle Buster from Tōreere showing us how we can hold Tipu for up to two weeks if garden beds are not ready for planting. This practice is called "mudding-out".

"WORKING TOGETHER FOR OUR COMMUNITY ."



Te Ao Hou Trust



TE AO HOU TRUST PROVIDES OFFICE SPACE FOR OTHERS TO DELIVER SERVICES TO THE COMMUNITY



TE HA ORA









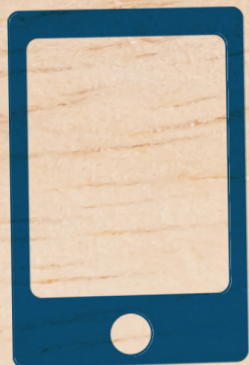
07 3156266  
FREE PHONE  
0800 832 646



[admin@teaohou.org.nz](mailto:admin@teaohou.org.nz)



for more information please visit our website  
[www.teaohou.org.nz](http://www.teaohou.org.nz)



027 348 6041

# **2020 AUDITED ACCOUNTS**

## **TE AO HOU TRUST**

### **FINANCIAL STATEMENTS**

#### **For the year ended 30 June 2020**

**Directory**

**Independent Auditor's Report**

**Statement of Comprehensive Revenue and Expenses**

**Statement of changes in Net Assets**

**Statement of Financial Position**

**Cash Flow Statement**

**Notes to Financial Statements**

# TE AO HOU TRUST

---

## DIRECTORY

---

### BOARD OF TRUSTEES

Dr Mark Haywood (Chairperson)

Debi Hocart

Tony Howe

Allen Waenga

### CHIEF EXECUTIVE

Linda Steel

### STAFF

Te Ao Marama Brass - Whānau Ora Kaimahi

Brooke Earp - Cleaner

Hope Hata - HFEC Systems Innovator

Lisa Gillies - HFEC Systems Innovator

Toni June - HFEC Lead Systems Innovator

Emma Kutia - KPTO Eastern Bay Coordinator

Memory Mio - Whānau Ora Kaiarataki

Pauline Patchett - Executive Assistant

Tunihia Sekona - ICM Kaimahi

Heron Tangohau - HFEC Systems Innovator

Agnes Walker - HFEC Manager

Irene Walker - KPTO Western Bay Coordinator

Cherish Wilkinson - HFEC Strategic Communications Manager

### LOCATION

38 KING STREET

ŌPŌTIKI 3162

07 315 6266

admin@teaohou.org.nz

---

# NOTES

---